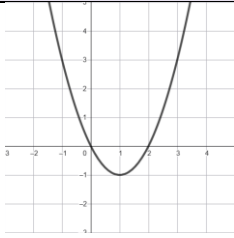
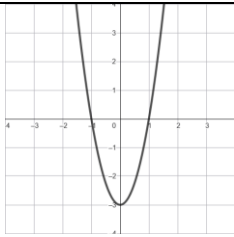


## PARÁBOLAS

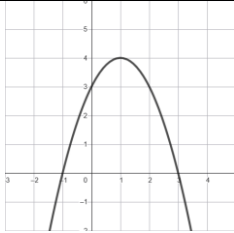
**Determina la expresión algebraica de las siguientes parábolas:**



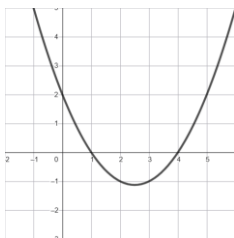
**SOL:**  $y = a \cdot x \cdot (x - 2)$   
 $(1, -1) \Rightarrow -1 = a \cdot 1 \cdot (1 - 2) \Rightarrow a = 1$   
 $y = x(x - 2)$



**SOL:**  $y = a \cdot (x + 1) \cdot (x - 1)$   
 $(0, -3) \Rightarrow -3 = a \cdot (0 + 1) \cdot (0 - 1) \Rightarrow a = 3$   
 $y = 3(x + 1)(x - 1)$



**SOL:**  $y = a \cdot (x + 1) \cdot (x - 3)$   
 $(0, 3) \Rightarrow 3 = a \cdot (0 + 1) \cdot (0 - 3) \Rightarrow a = -1$   
 $y = -(x + 1)(x - 3)$



**SOL:**  $y = a \cdot (x - 1) \cdot (x - 4)$   
 $(0, 2) \Rightarrow 2 = a \cdot (0 - 1) \cdot (0 - 4) \Rightarrow a = \frac{1}{2}$   
 $y = \frac{(x-1)(x-4)}{2}$